



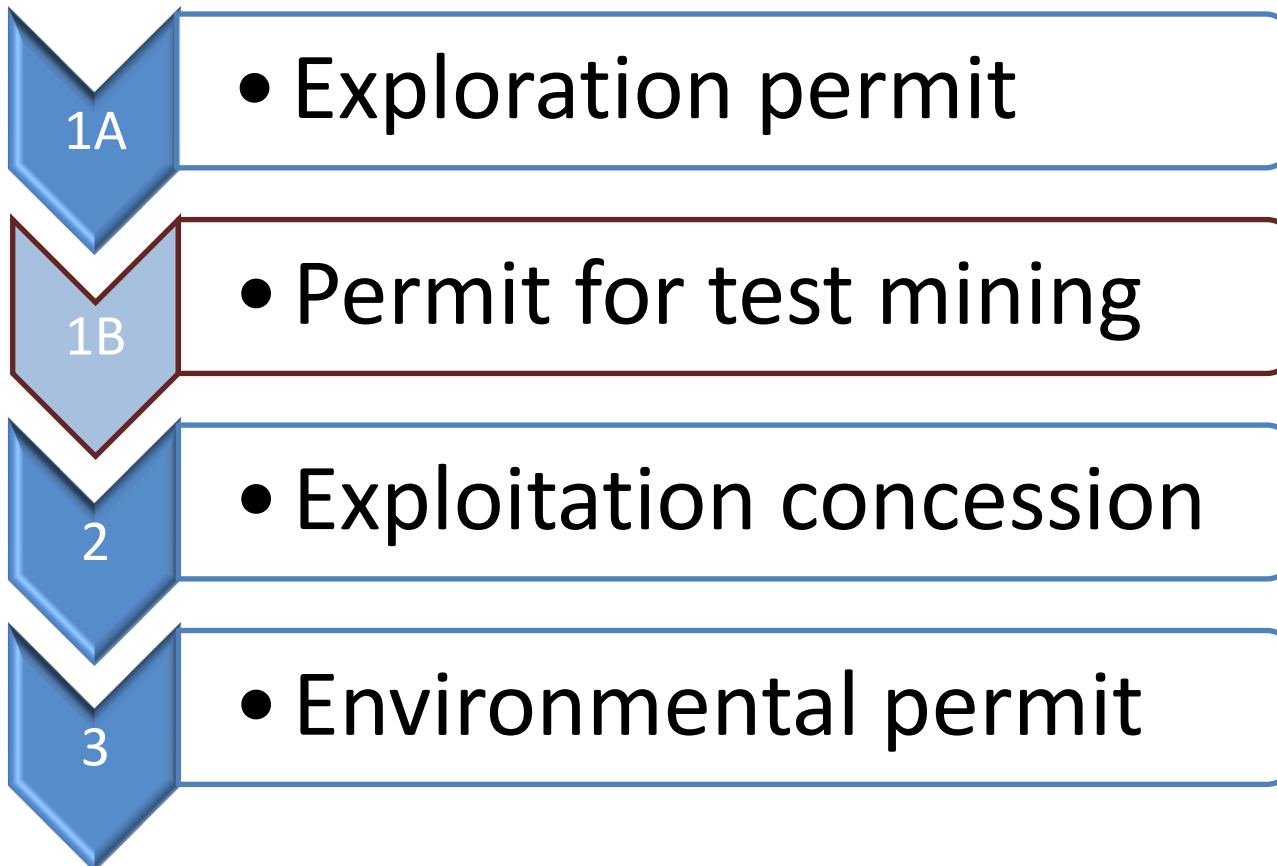
BEOWULF MINING plc

The licensing chain for mining in Sweden





Main permits required for mining





Scope

Exploration Permit

- Exclusive right to explore a defined area (including test mining)
- Qualifies for priority for exploitation concession
- Issued for 3 years, maximum extension up to 15 years

Exploitation Concession

- Exclusive right for 25 years to exploit a deposit. Can be extended.

Environmental Permit

- Permit to design, build, operate and decommission a deposit under defined conditions



The Process

Exploration license

- Issued by the Swedish Mining Inspectorate
- Work plan must be communicated to landowners/stakeholders

Permit for test mining

- Issued by the County Administrative Board
- Requires an EIA*. Includes a formal stakeholder consultation process.

Exploitation Concession

- Issued by the Swedish Mining Inspectorate
- Requires an approved EIA focusing on land use. No formal consultation process including stakeholders.

Environmental Permit

- Issued by the Land- and Environmental court
- Requires an approved EIA. Includes a formal stakeholder consultation process.

* EIA = Environmental Impact Assessment



Additional legal frameworks

Plan and Building Act

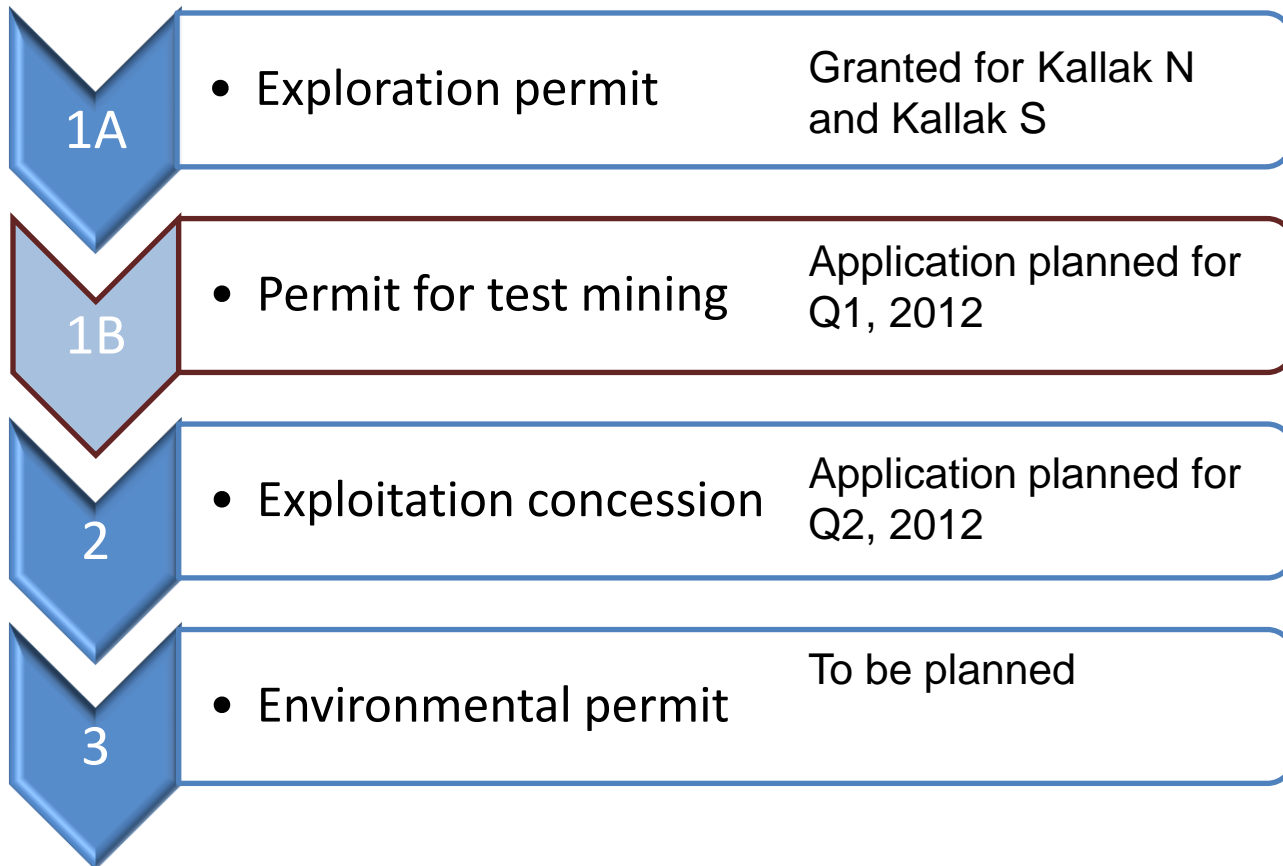
Heritage Conservation Act

Ordinances, e.g.

- ...on waste from recovery operations
- ..on environmental quality standards
- ... waste
- ...on operator self monitoring



Kallak project - licensing status January 2012





EIA – Main content

Area description

Value inventories

Current land use

Planned operation

Potential impacts

Impact reducing measures

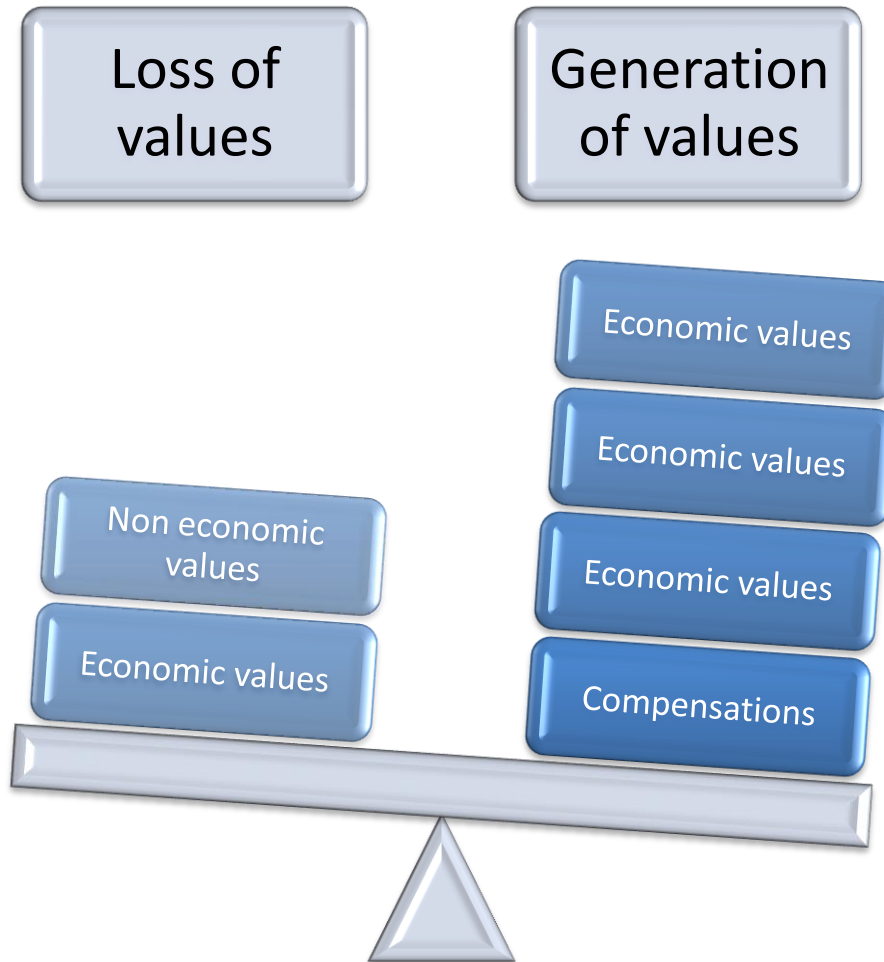
Remaining impacts

Socio economy

Concluding assessment

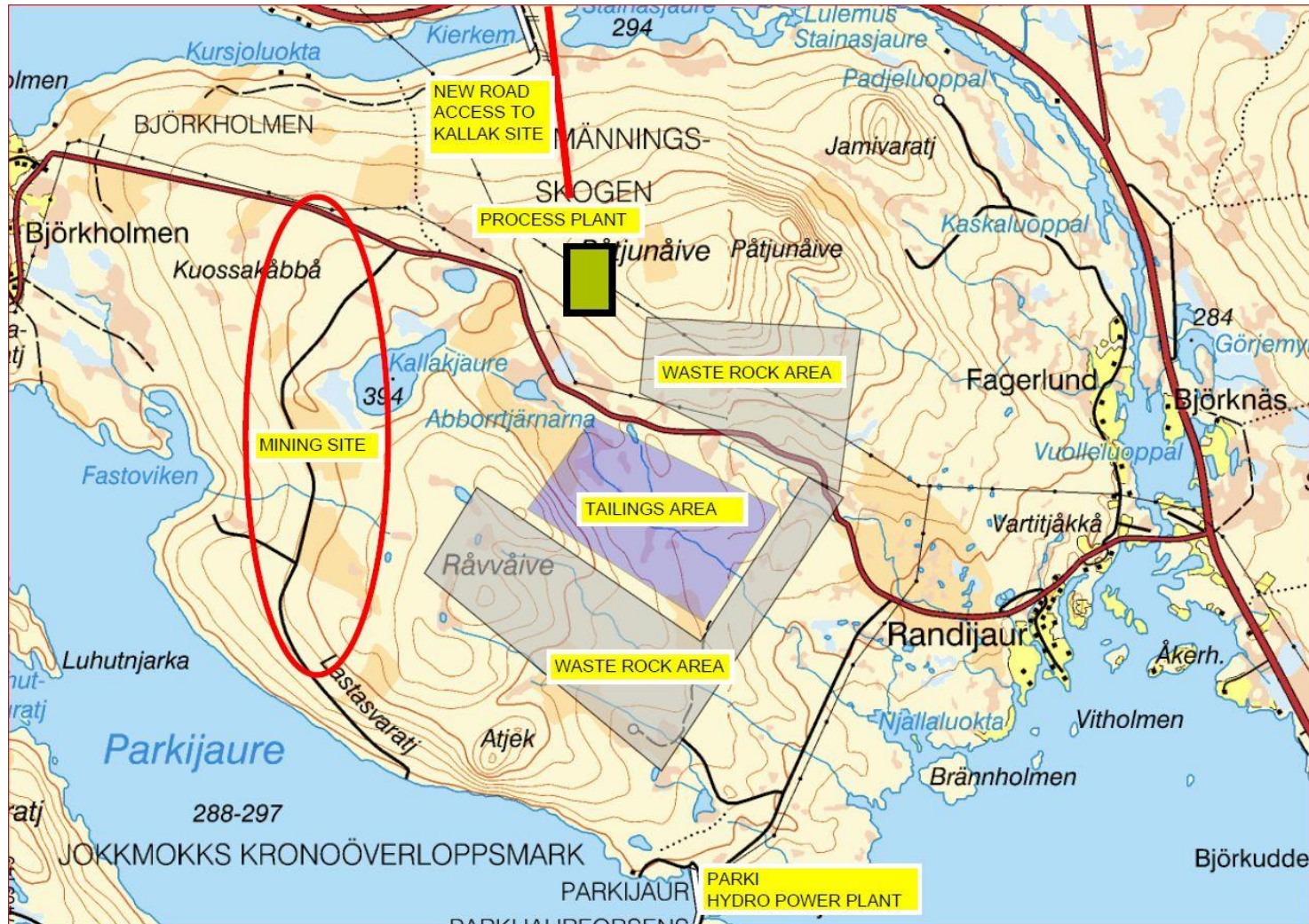


Concluding assessment

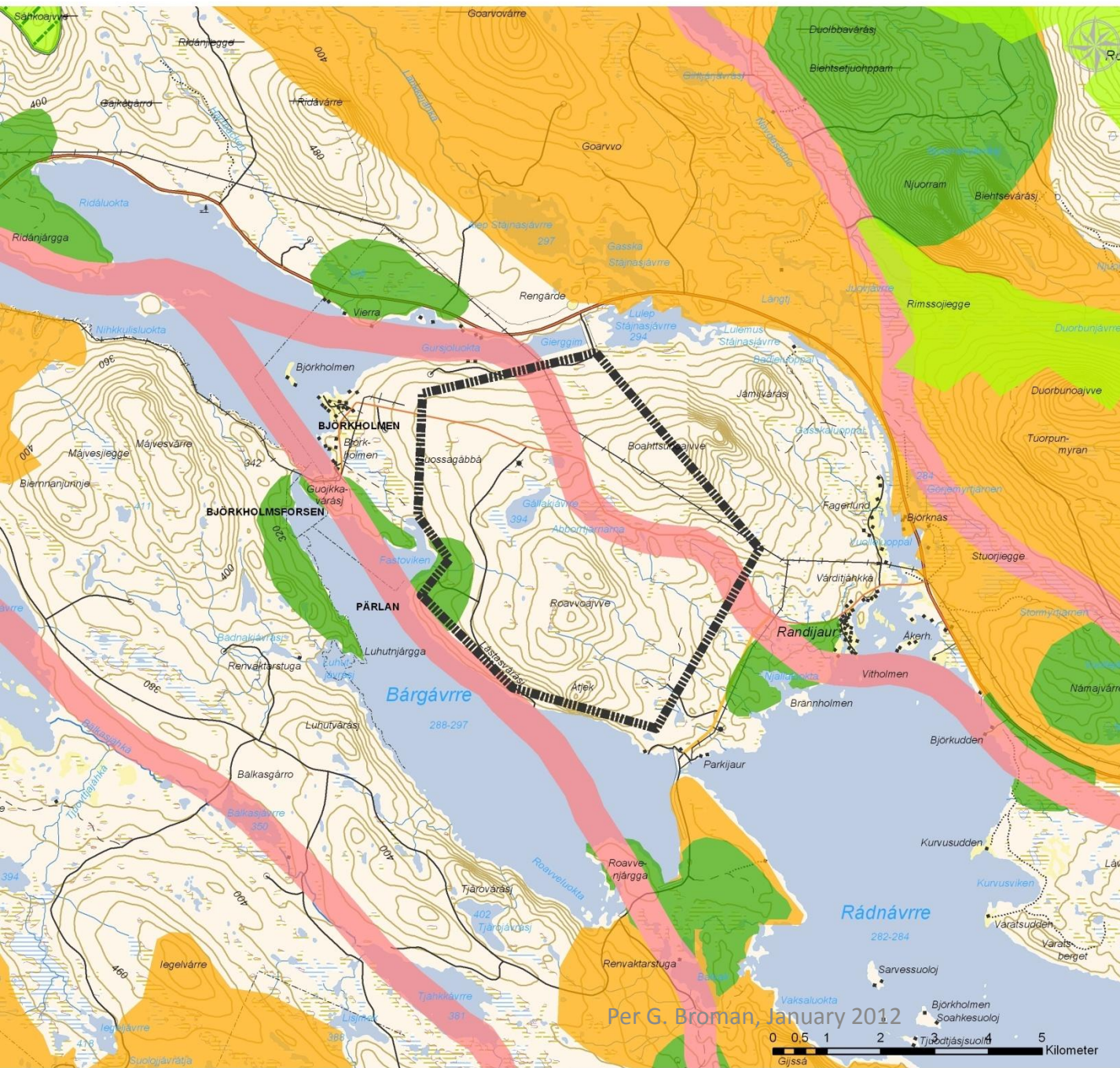




KALLAK preliminary suggested land use



Kallak – Areas for survey of nature- and heritage values



Teckenförklaring

- Undersökningsområde Kallak
- Riksintresse Natura 2000
- Riksintresse rennärning
- Flyttled
- Kärnområde
- Rastbete
- Svår passage
- Område av riksintresse
- Övriga skyddade områden
- Naturreseptat



KARTINFORMATION

Bakgrundskarta: (C) Lantmateriet, utdrag ur Se Sverige/Din karta

Källa övrig information: Länsstyrelsens GIS-tjänst, www.gis.lst.se, Skogsstyrelsens karttjänst, Skogens källa.

Projektion: SWEREF 99 TM

Ritad av: Lina Ohman, Hifab AB

Storlek: A3

Datum: 2011-03-25 11:18:23



Hifab AB
Storgatan 115, 2 tr
903 33 Umeå

Per G. Broman, January 2012

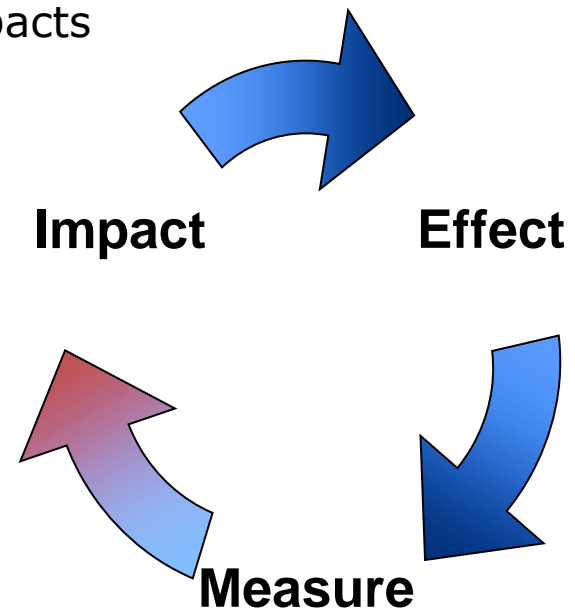
0 0.5 1 2 5
Kilometer

Sökväg: \\svuvmadm01\gemensam\00 - ENVIPRO\Projekt 2010\Projekt Kallak\Projekt naturvärden.mxd



EIA- Expected impacts and preventive measures

- Landscape
- Streaming water – flows and physical impacts
- Streaming water– chemistry
- Ground water
- Air
- Noise, vibrations, etc
- Nature values
- Heritage values
- Areas of national interest
- Opposing interests
- Conservation of nature resources
- Transportation
- Waste issues
- Hazards
- Socio economy





- Reindeer herding
- Mineral exploitation ?

Areas of
national interest



- Reindeer herding
- Logging
- Settlements
- Hydro power
- Hunting, fishing
- Recreation

Present land use



- Local business structure
- Local job market
- Job generation by project

Socio economy



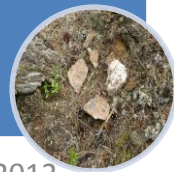
- Terrestrial
- Aquatic

Nature values



- Landscape level
- Single objects

Heritage values



- Water
- Landscape
- Flora, fauna
- Climate, Air, etc

Env targets , env
quality norms,
etc

